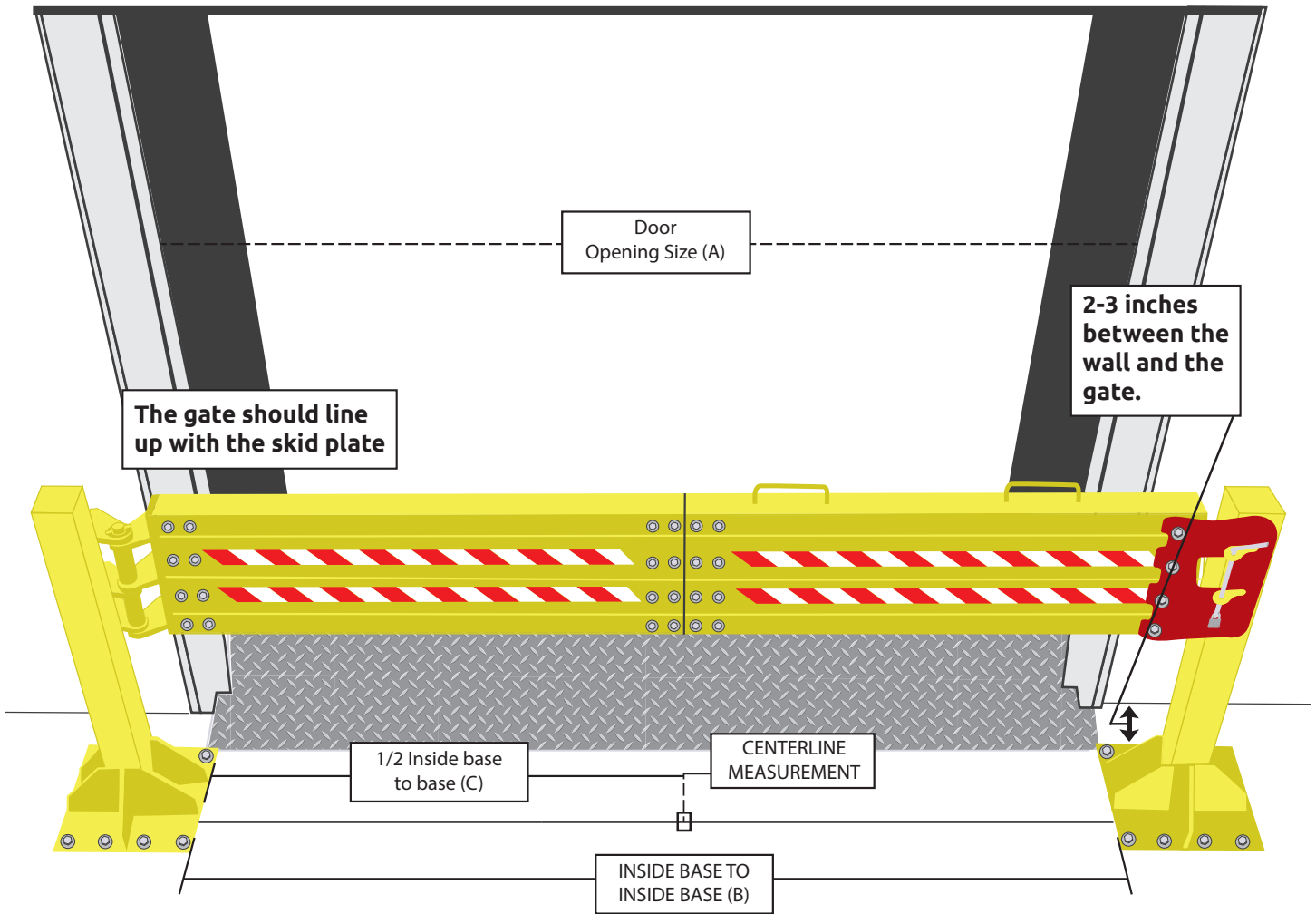


DEFENDER  GATE
SAFETY BARRIER SYSTEMS

Instruction Manual
Ultimate Defender Gate



Defender Gate Sizing Chart

Opening Size (A)	Inside base to inside base (B)	1/2 from Base to Base (C)	Defender Gate Size
6 Foot	72.250 Inches	36.1250 Inches	6 Foot
8 Foot	96.250 Inches	48.1250 Inches	8 Foot
9 Foot	108.250 Inches	54.1250 Inches	9 Foot
10 Foot	120.250 Inches	60.1250 Inches	10 Foot
12 Foot	144.250 Inches	72.1250 Inches	12 Foot

The **Defender Gate** arrives in three pieces securely wrapped and attached to a pallet. All hardware is included. Congratulations on making your loading dock the safest in the world!

Shipment Contains: Box of Hardware, 1 latch post bollard, 1 hinge post bollard, 1 gate, 1 set of directions



Bollard Hardware:

- 20 - wedge anchors 5/8" x 6"
- 20 - flat washers
- 20 - nuts
- 1 - 5/8" drill bit
- 1 - Black sharpie marker
- 1 - Allen Wrench



Gate Hardware:

- 8 - flat washers 1/2"
- 4 - hex head screws 1/2"
- 4 - nylock nuts
- 1 - padlock



Required Tools:

- Hammer Drill
- Level
- Tape Measure
- 3/4" Wrenches or Socket Wrenches
- Hammer

INSTRUCTIONS: PART ONE

Installing the bollards.

Tools: Drill, level, tape measure, 3/4" socket wrench, hammer, allen wrench.

Begin with HINGE BOLLARD.

- 1 Determine the size of the door opening. (A)
- 2 Divide this measurement in half to find the center line of the door opening and set the inside edge of the HINGE BOLLARD baseplate to (C) 1/2 of the centerline measurement
- 3 Make sure you have **at least 2-3 inches** from the wall or door dock rails.
- 4 Drill the holes for the anchor bolts with a minimum depth of 5 inches using the bollard as a guide.
- 5 With bollard in place, insert 10, 5/8" x 6" anchor bolts with a hammer.
- 6 Place washer and nut on bolt before striking and tighten all bolts.
- 7 Measure distance (B) from inside edge of the HINGE BOLLARD baseplate to the inside edge of the LATCH BOLLARD baseplate. Make sure the distance from the wall or frame is the same as the HINGE BOLLARD.
- 8 Repeat steps 3-7 to install LATCH BOLLARD.
- 9 Level both bollards using the supplied leveling screws and allen wrench.
Begin with HINGE BOLLARD.
 - A. Place level on far left side to check plumb.
 - B. Tighten screws to make level.
 - C. Place on 90 degree side from previously leveled.
 - D. Loosen/tighten nuts on bollard to level.
 - E. Repeat on latch bollard.

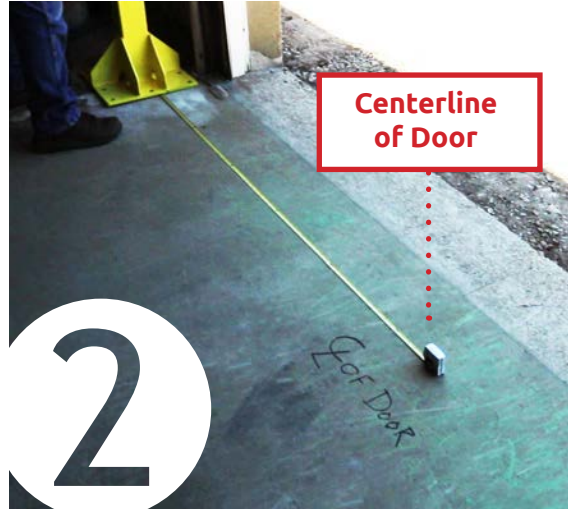


1



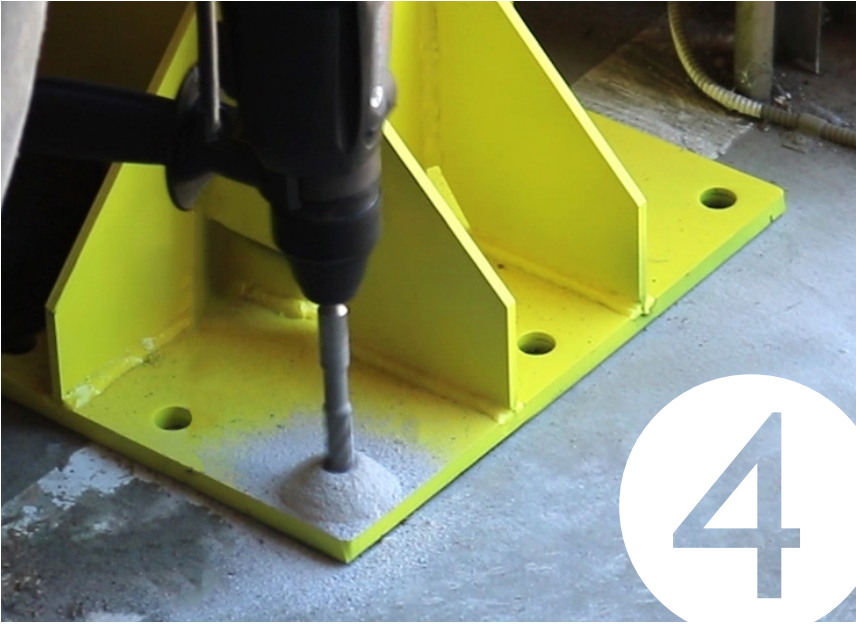
2-3 inches from wall or rails

3



Centerline of Door

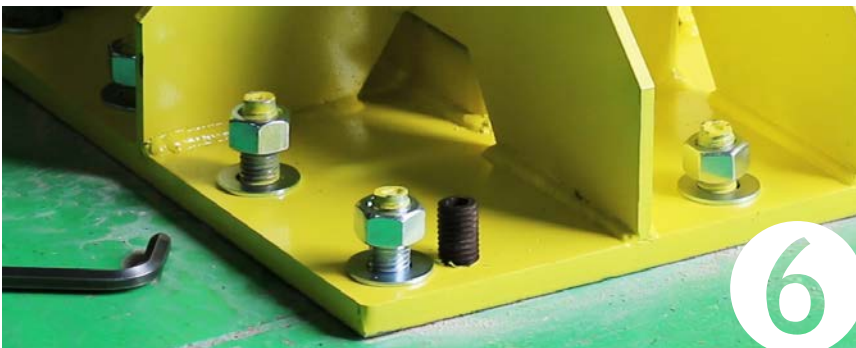
2



4



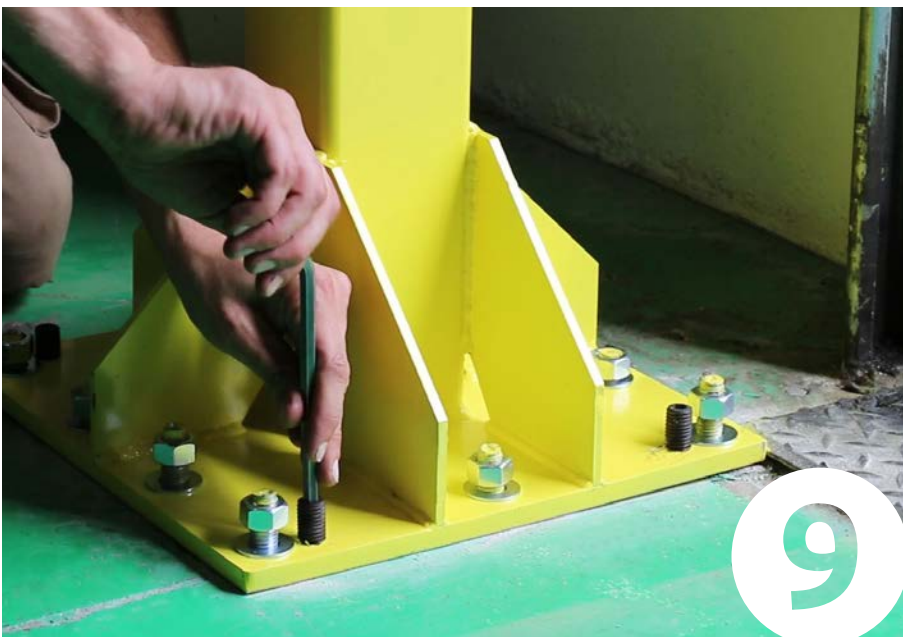
5



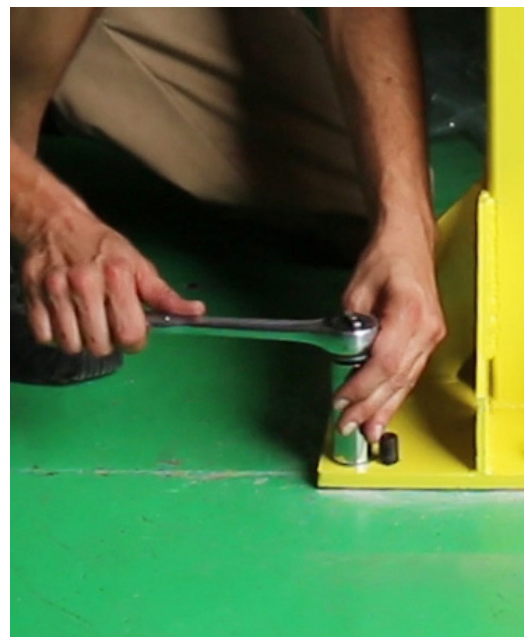
6



7



9



INSTRUCTIONS: PART TWO

Installing the Gate.

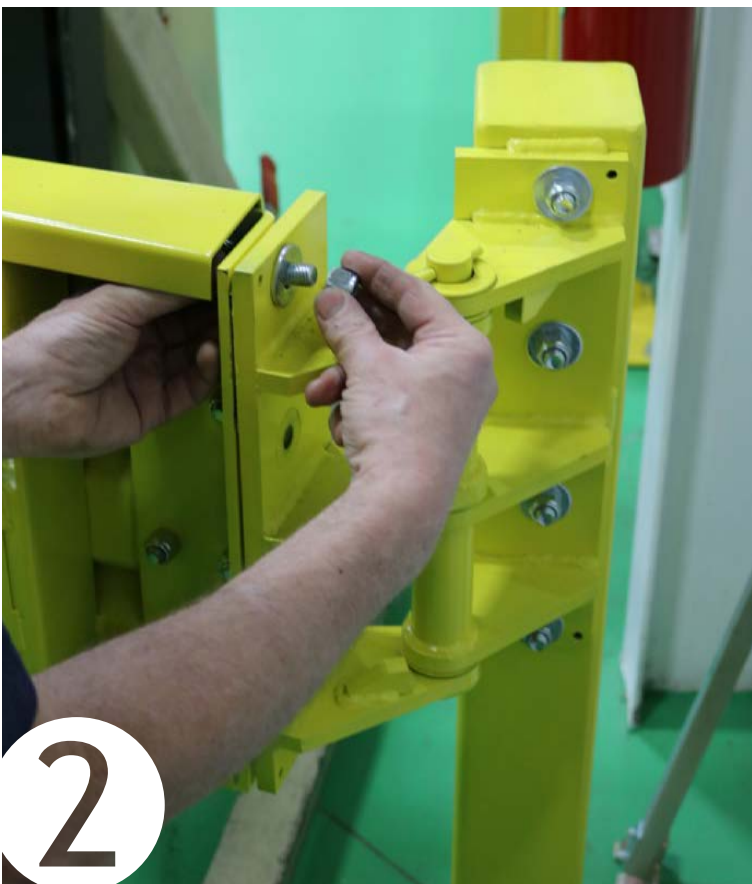
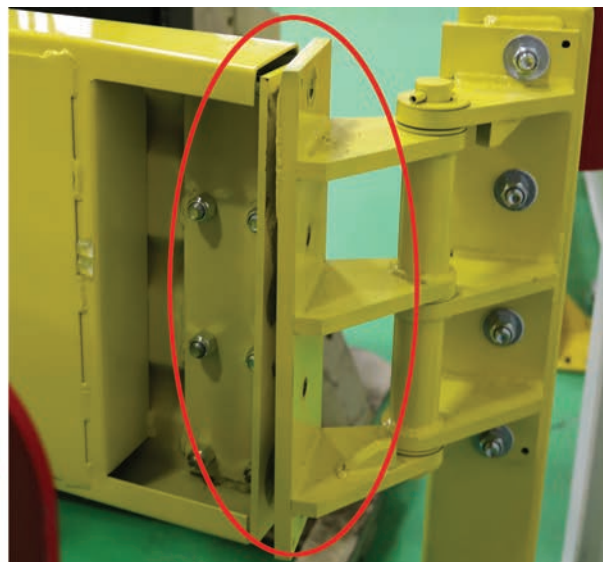
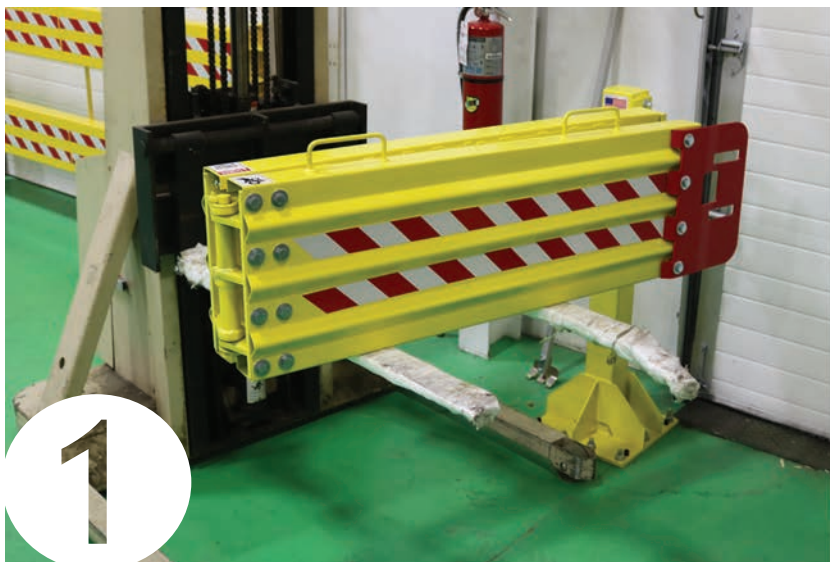
Tools: level, 3/4" wrenches or socket wrench.

Optional: Forklift. If a forklift is not available, a team of 3-4 people is recommended to install the gate properly.

- 1 With the GATE still folded, line up the holes on the GATE with the holes on the HINGE BOLLARD. Make sure the handles are on top facing you.
- 2 With washers on both sides, insert all four 1/2" hex head bolts.
- 3 Using nylock nuts, tighten the bolts to secure the GATE on the hinge.
- 4 Open GATE and check leveling at multiple points.
- 5 Close GATE, drop the pin in, and lock to complete installation. A slight leveling adjustment may be necessary to assure a smooth fit into the LATCH BOLLARD.

You're done! Your Defender Gate is ready to keep your dock safe!







DEFENDER  GATE

SAFETY BARRIER SYSTEMS

1-800-331-2973 www.usnetting.com