

# DEFENDER GATE

## SAFETY GATE SYSTEM

by



# Instruction Manual

**ULTIMATE DEFENDER GATE**



**STANDARD DEFENDER GATE**



**STANDARD SAFETY GATE**



The **Defender Gate** arrives in three pieces securely wrapped and attached to a pallet. All hardware is included. Congratulations on making your loading dock the safest in the world!

**KIT CONTENTS:** 1 bag hardware per bollard, 1 bag of gate hardware, 1 latch post bollard, 1 hinge post bollard, 1 gate



### Bollard Hardware:

- 20 - 5/8" x 6" wedge anchors , 10 per bollard
- 20 - washers, 10 per bollard
- 20 - nylock nuts, 10 per bollard
- 1 - 5/8" drill bit
- 1 - Black sharpie marker



### Gate Hardware:

- 1 - Drill bit
- 2 - hitch pins (standard/double)
- 8 - washers (ultimate)
- 4 - cap screws 1/2" x 5.5" (ultimate)
- 1 - allen wrench



### Required Tools:

- Drill
- Level
- Tape Measure
- 5/8" socket wrench
- 1/2 " socket wrench
- 3/4" Wrench
- Hammer

**1-800-331-2973**

# INSTRUCTIONS: PART ONE

## Installing the bollards.

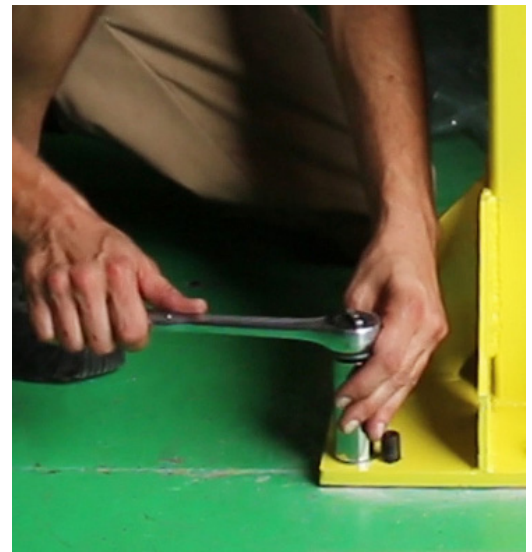
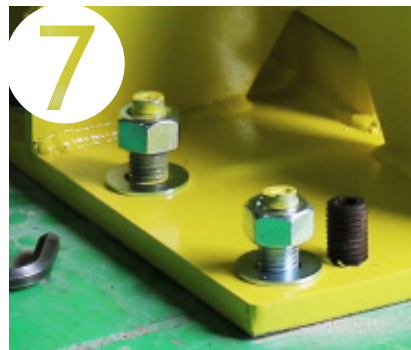
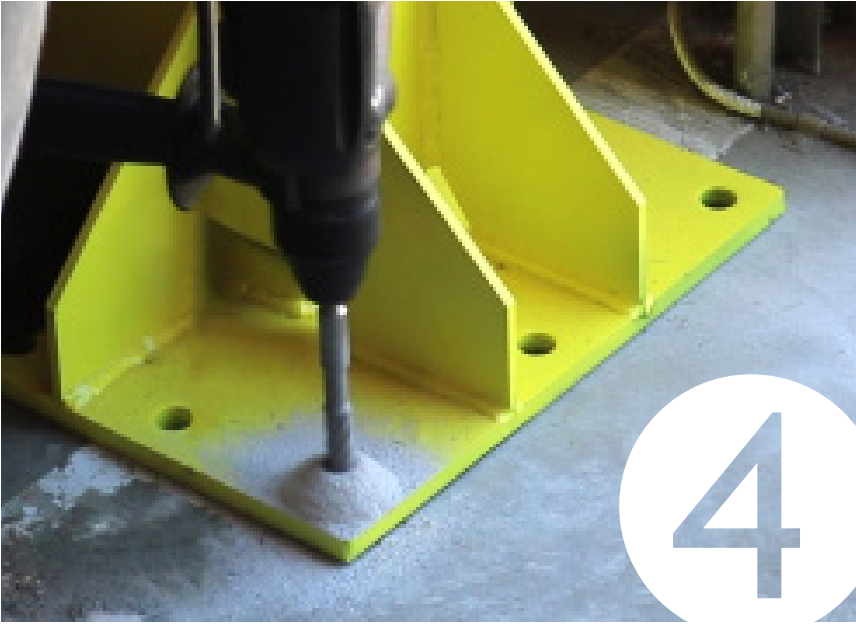
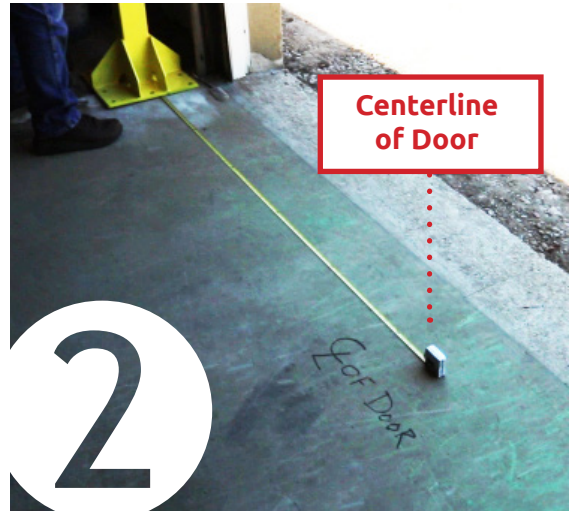
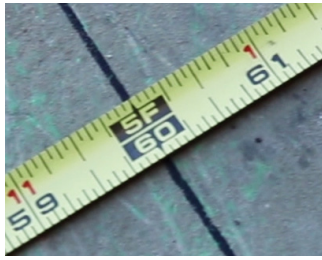
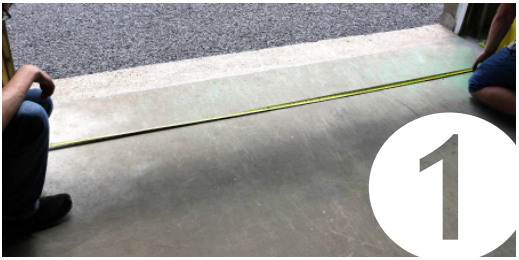
Tools: Drill, level, tape measure, 5/8" socket wrench, hammer, allen wrench.

Begin with hinge bollard. Bollard installation is the same for each gate type.

---

- 1 Determine the size of the door opening.
- 2 Divide this measurement in half to find the center line of the door opening and set the inside edge of the hinge bollard baseplate at half the distance from the centerline.
- 3 Make sure you have **at least 2-3 inches** from the wall or door dock rails.
- 4 Drill the holes for the anchor bolts with a minimum depth of 5 inches using the bollard as a guide.
- 5 Insert 10, 5/8" x 6" anchor bolts with a hammer.
- 6 Place bollard base over the anchor bolts.
- 7 Place a washer and nylock nut over each bolt and snug all bolts.
- 8 Measure distance from inside edge of the hinge bollard baseplate to the inside edge of the latch bollard baseplate. Make sure the distance from the wall or frame is the same as the hinge bollard.
- 9 Repeat steps 1-7 to install latch bollard.
- 10 Level both bollards using the supplied leveling screws and allen wrench.  
*Begin with hinge bollard.*
  - A. Place level on far left side to check plumb.
  - B. Tighten screws to make level.
  - C. Place on 90 degree side from previously leveled.
  - D. Once level on all sides, tighten nuts on bollard.
  - E. Repeat on latch bollard.





**1-800-331-2973**

# INSTRUCTIONS: PART TWO

## Installing the Ultimate Gate.

**Tools:** Drill, level, hammer, 1/2" socket wrench, 3/4" socket wrench.

**Optional:** Forklift. If a forklift is not available, a team of 3 people is recommended to install the gate properly.

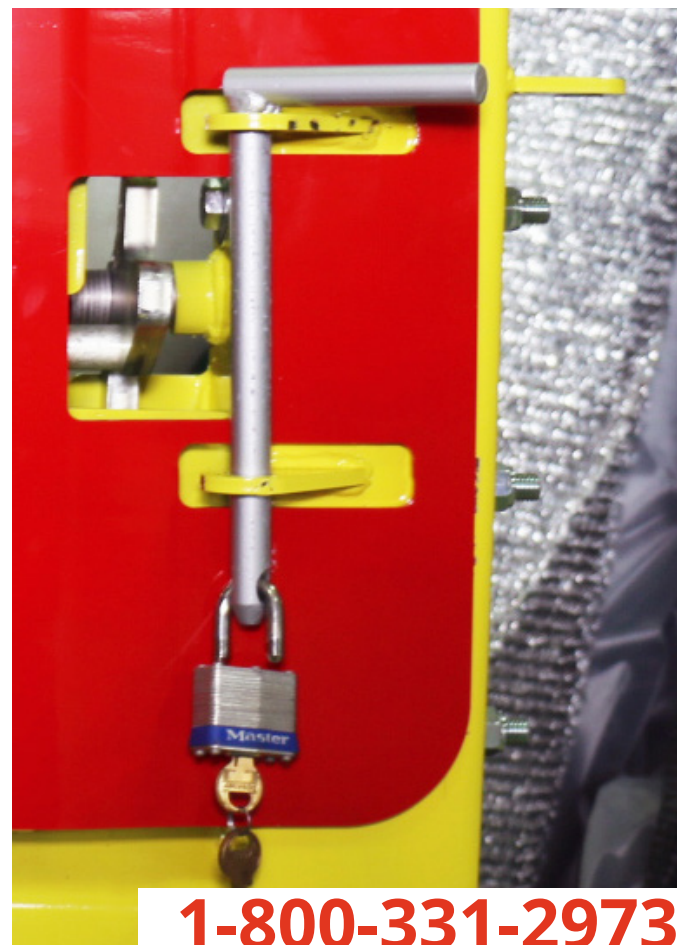
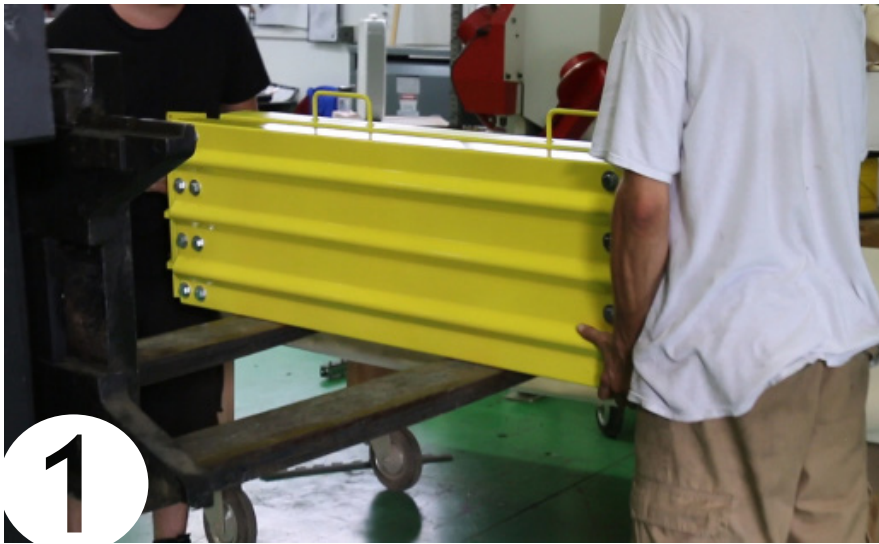
---

- 1** With the gate still folded, line holes of the gate hinge up with the hinge bollard. Make sure the handles are on top and facing the outside.
- 2** With washers on both sides, insert all four 1/2" x 5.5" cap screws and use nylock nuts to secure.
- 3** Check that the hinge bracket is level, top to bottom.
- 4** Tighten bolts.
- 5** Open gate and check leveling at multiple points.
- 6** Once leveling is complete, fold gate, and lock.

You're done! For step-by-step video instructions, please visit our youtube channel by searching US Netting Inc on youtube.com or refer to the link on our website.







# INSTRUCTIONS: PART TWO

## Installing the Standard or Double Gate.

**Tools:** Drill, level, pin hammer, 1/2" socket wrench, 3/4" socket wrench.

**Optional:** Forklift. If a forklift is not available, a extra helper is recommended to install the gate. Double gate instructions same as standard gate.

---

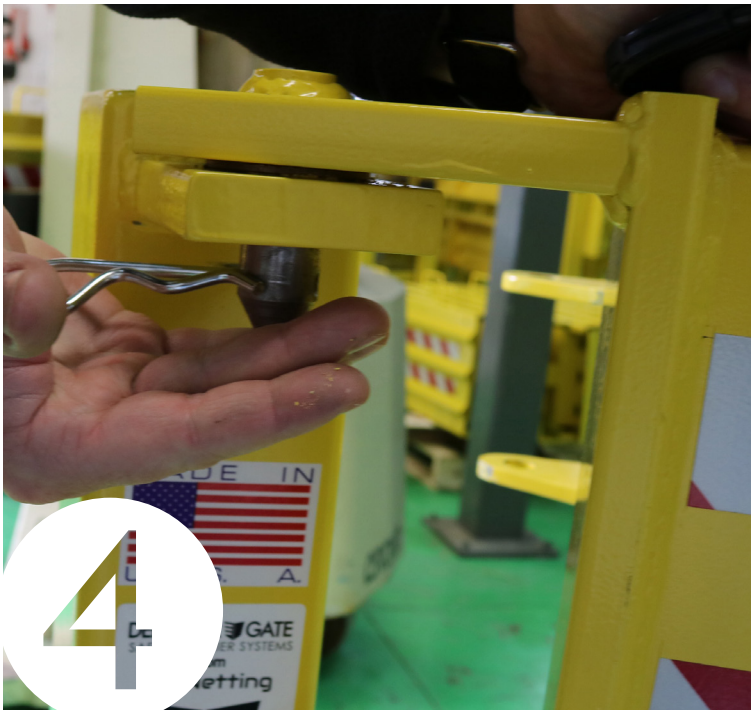
- 1 With the gate still folded, insert gate pins into the hinge side bollard. Be sure the handles are on top and facing the outside.
- 2 Ensure gate is sturdy and placed evenly on hinge bollard.
- 3 Check that the hinge bracket is level, top to bottom.
- 4 Insert hitch pins into the 2 hinge pins on the gate
- 5 Open gate and check leveling at multiple points.
- 6 Hook lanyard to the safety gate pin
- 7 Open gate, swing to latch, drop the pin in, and lock.

You're done! For step-by-step video instructions, please visit our youtube channel by searching US Netting Inc on youtube.com or refer to the link on our website.



**1-800-331-2973**









**US NETTING**  
CUSTOM NETTING & INDUSTRIAL PRODUCTS

**1514 VESHECCO DR.  
ERIE, PA 16501**

**DEFENDER  GATE**  
SAFETY GATE SYSTEM

**[sales@usnetting.com](mailto:sales@usnetting.com)**

**[www.usnetting.com](http://www.usnetting.com)**

**1-800-331-2973**